

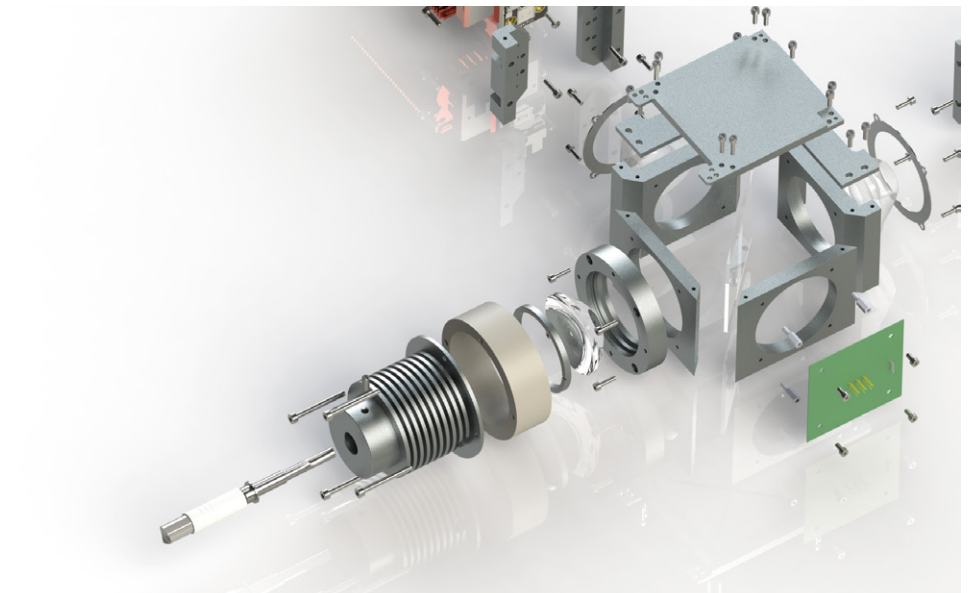
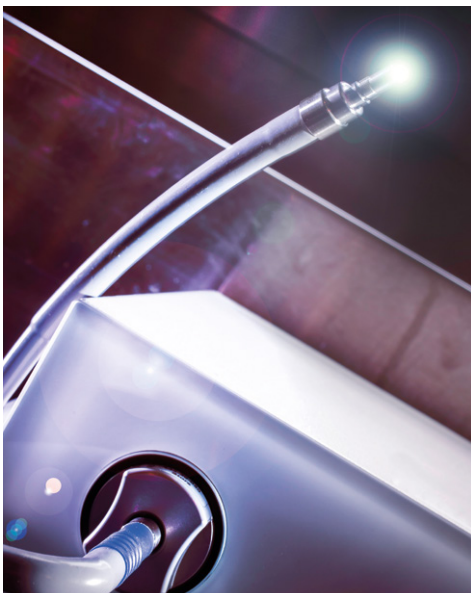
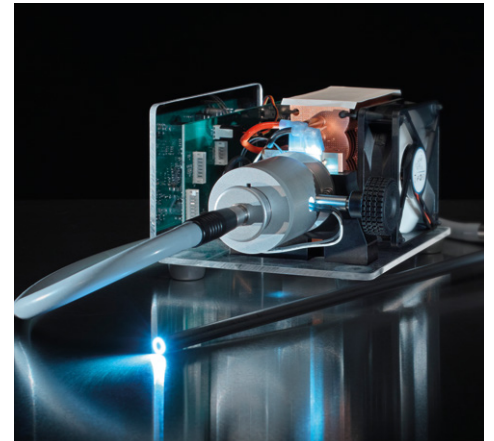
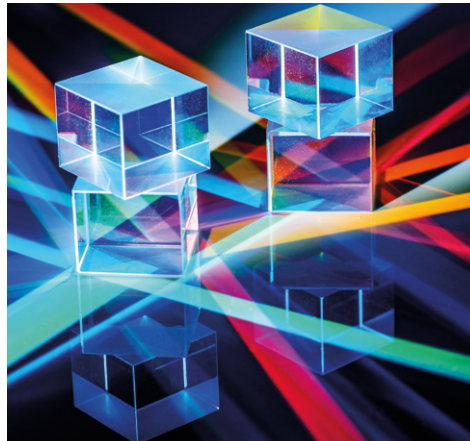


DEVELOPMENT EXPERTISE

LIGHTING SOLUTIONS

PHOTONIC, a member of the WILD Group, consists of a team of experts for opto-mechatronic devices. As an application specialist for light, PHOTONIC is an established partner for solutions in industry, medicine, and life science as well as security technology. From **Xenon** or **Halogen** based systems to **LED** and **Laser** technology, PHOTONIC's intelligent design can be adjusted to fit your lighting requirements.

Since the foundation of the company, the core competencies of PHOTONIC are continuously expanding. Driven by **innovative power, uncompromising quality** and an **excellent price-performance ratio**, PHOTONIC's mission is to be the leading service partner for development and manufacturing of complex opto-mechatronic systems.



DEVELOPMENT & TECHNOLOGY EXPERTISE



Customers value the know how combination of PHOTONIC and WILD in optics, precision mechanics, electronics, software, and plastics engineering. PHOTONIC's team of highly qualified engineers shows its strength where precision and innovation combined with a profound knowledge of standards and certifications are key.

▼ Optical Illumination System Design

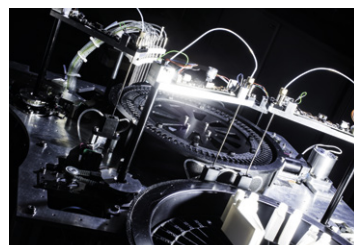
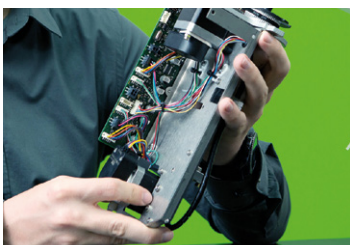
Custom lighting solutions based on your specific needs using the newest technologies in the field of LED and lasers. Together we identify the specifications to realize a unique concept in optical design and opto-mechanics to reach the optimum in performance, quality and cost for your product. Our broad manufacturing knowledge inside the WILD Group ensures OEM products ready for production.

▼ Electronics & Software

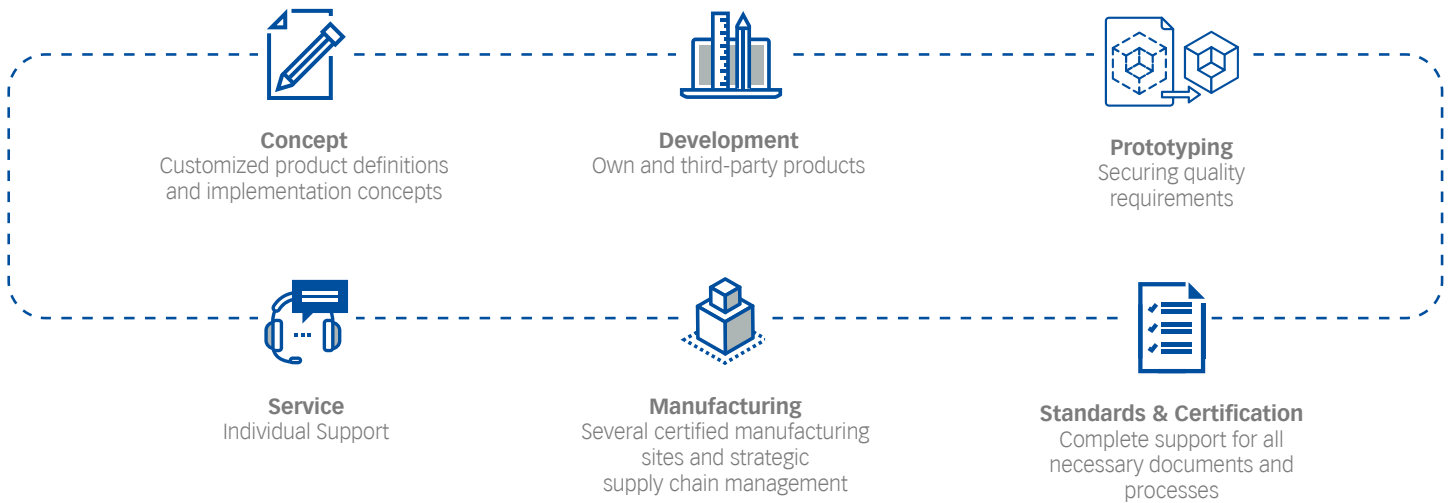
Our expertise ranges from high-power LED-drivers, other power electronics and sensor systems to analogue and digital interfacing standards. Based on your needs we develop the hardware and software to be tailor-made for the functionality you require.

▼ Mechanics

Conception, design and performance testing of opto-mechatronic systems. This includes component housing, thermal management, motion systems and opto-mechanics. From prototype to mass-production, we assist in material selection and provide intelligent cast design and manufacturing options based on technical and economical requirements.



SERVICE PORTFOLIO



PHOTONIC services encompass the **whole product development process** — ranging from rapid prototyping and supply chain management to production and after sales services. We use established processes based on year-long experience for each development phase. **Your focus is our focus** — the successful production, market launch, and sales of your product.

In addition to internal resources and resources within the WILD group, our team has access to the WILD Integrated partner Network (WIN). **Working with us enables you to profit from cross industry knowledge and technology transfer.**